

WSC SERIES

Brass wing style screw connect couplers with steel nut

INTRODUCTION

Holmbury's WSC Series brass screw connect couplers are designed to allow connection and disconnection by hand. The brass construction makes them the idea choice for water based applications.

CONSTRUCTION

- Brass body
- Wing nut carbon steel with trivalent plating
- Fitted with Nitrile seals

FEATURES

- Can be connected with 50 bar residual pressure in the hydraulic circuit
- Bidirectional flow

ACCESSORIES

- Dust Caps, Plugs and Mounting Flanges are available for the WSC Series



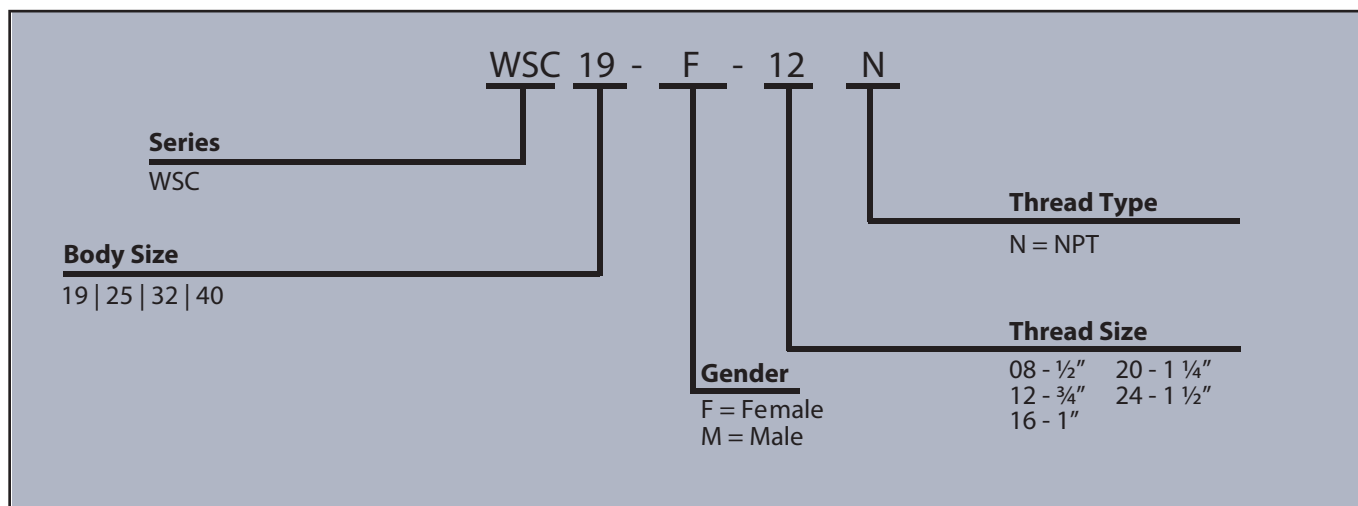
SPECIFICATIONS

- Operating temperatures (With Nitrile seals): -40°C (-40°F) to 106°C (223°F)

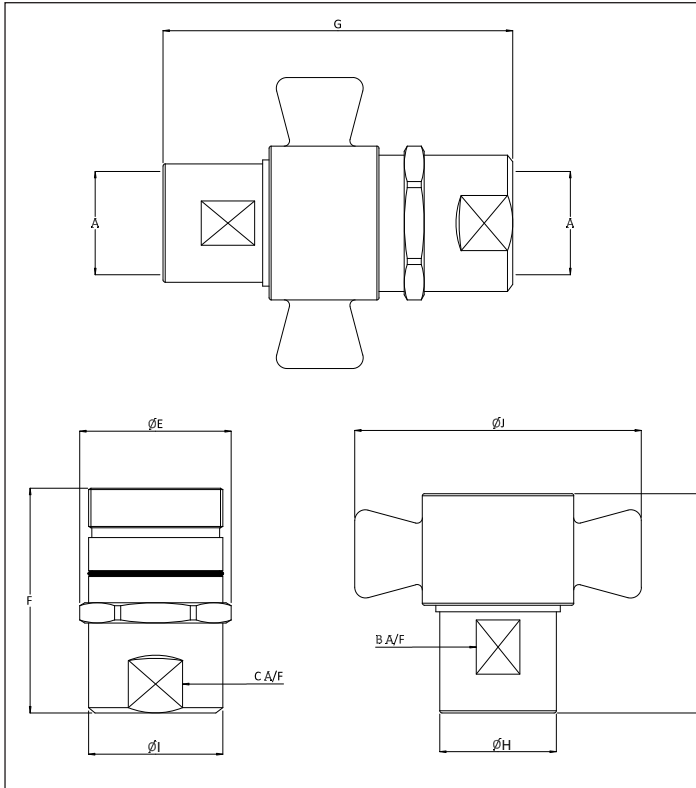
APPLICATIONS

- Trailers
- Wet line kits
- Oil and gas

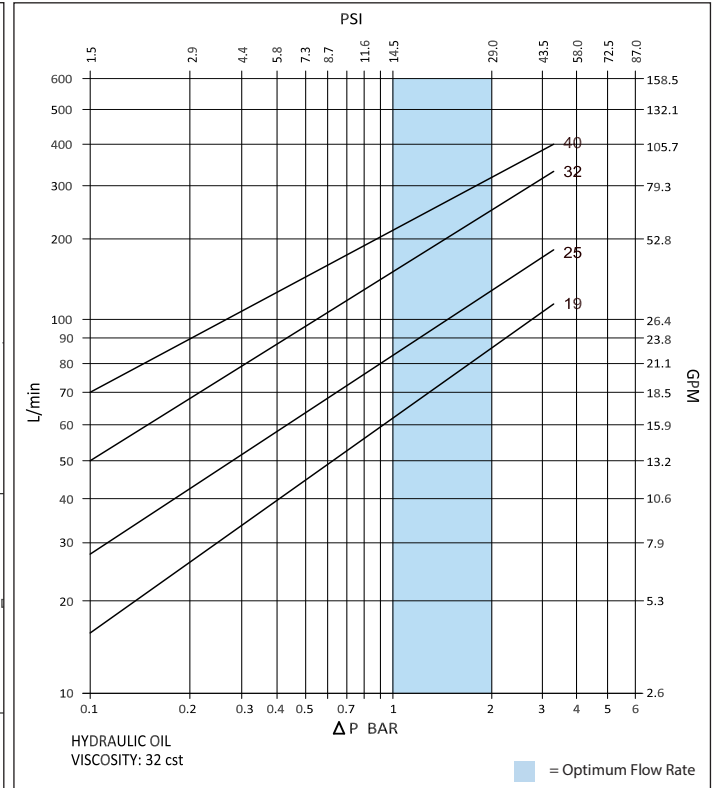
ORDER CODES



DRAWING



PRESSURE DROP CHARACTERISTICS



STAINLESS STEEL & BRASS COUPLERS

DIMENSIONS

Size	Thread Size (A)	B	C	D	ØE	F	G	ØH	ØI	ØJ	Maximum Working Pressure	Burst Pressure (Coupled)	Burst Pressure (Male)	Burst Pressure (Female)
		Dimensions in mm									Bar			
		Dimensions in Inches									Psi			
WSC 19	1/2" 3/4"	29.0	33.3	80.3	44.0	79.1	133.5	37.5	31.7	103.9	210	650	650	600
		1.1	1.3	3.2	1.7	3.1	5.3	1.5	1.2	4.1	3045	9425	9425	8700
WSC 25	1"	36.3	39.6	95.3	51.7	89.5	154.3	44.2	39.8	110.6	210	650	650	600
		1.4	1.6	3.8	2.0	3.5	6.1	1.7	1.6	4.4	3045	9425	9425	8700
WSC 32	1 1/4"	45.0	47.6	99.0	60.2	93.5	163.6	53.0	48.0	134.0	190	650	650	600
		1.8	1.9	3.9	2.4	3.7	6.4	2.1	1.9	5.3	2755	9425	9425	8700
WSC 40	1 1/2"	51.0	57.0	101.4	71.6	104.4	178.0	62.7	55.0	134.8	175	525	525	475
		2.0	2.2	4.0	2.8	4.1	7.0	2.5	2.2	5.3	2538	7613	7613	6888

PSI= Bar x14.5 Inches= mm/25.4

